

## WEARABLE MEDICAL DEVICES

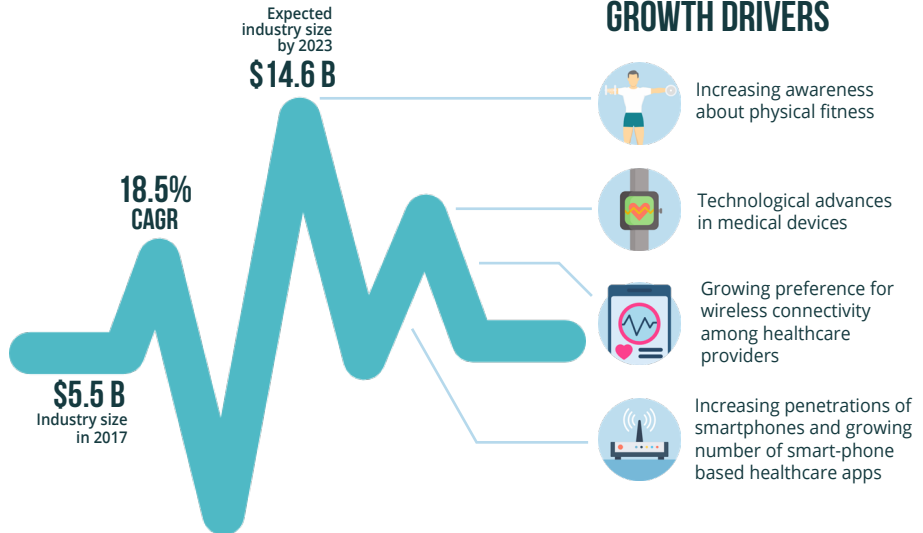
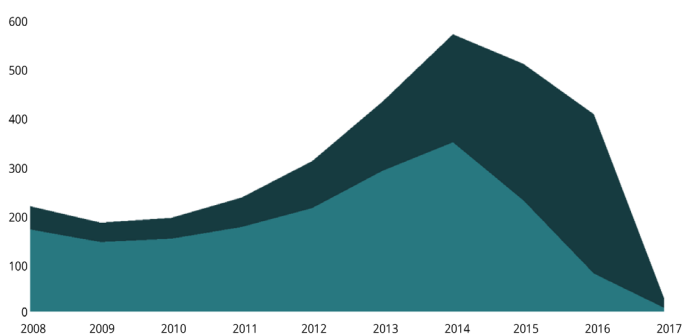


Wearable medical devices are defined as:

- devices that are autonomous, that are noninvasive, and that perform a specific medical function such as monitoring or support over a prolonged period of time.
- biosensors that monitor physiological data, usually with remote/wireless communication, as part of any wearable item that attaches to the body. Activity monitors, smart watches, smart clothing, and patches are examples.

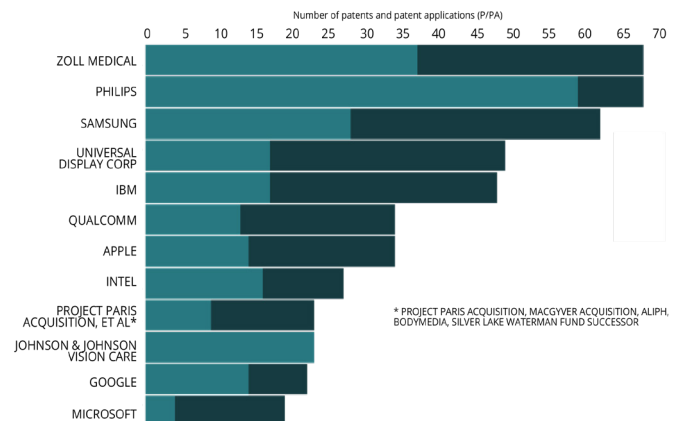
Patent  
Patent application

**3,097** patents and patent applications

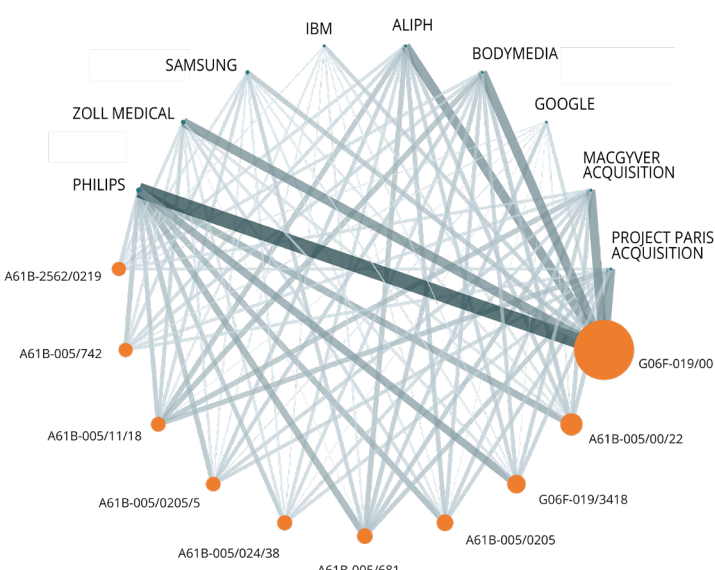


## PATENTING ACTIVITY

## TOP ASSIGNEES



## CLUSTER MAP TOP 10 CPCs



## TOP 5 CPCs

CPC CODE	DESCRIPTION
G06F-019/00	Digital computing or data processing equipment or methods, specially adapted for specific applications
<b>A61B-005/00/22</b>	<b>Monitoring a patient using a global network, e.g. telephone networks, internet</b>
G06F-019/3418	Telemedicine, e.g. remote diagnosis, remote control of instruments or remote monitoring of patient carried devices
A61B-005/0205	Simultaneously evaluating both cardiovascular conditions and different types of body conditions, e.g. heart and respiratory condition
<b>A61B-005/681</b>	<b>Wristwatch-type devices</b>

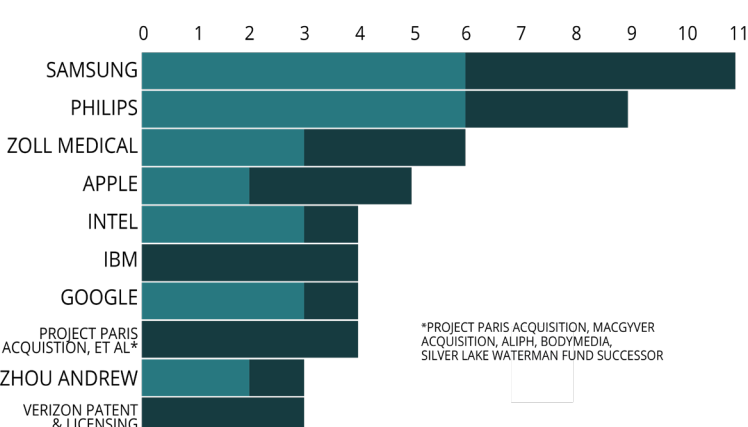
**ParolaCUSTOM**  
Get a fully-customized Patent Landscape Report on Wearable Medical Devices or any technology area with ParolaCUSTOM!

Contact us now at [info@parolaanalytics.com](mailto:info@parolaanalytics.com)



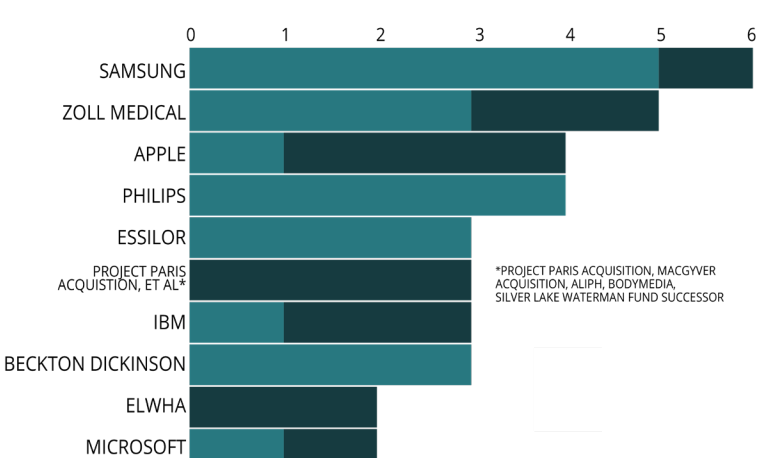
## PATIENT MONITORING (A61B-005/00/22)

**316** patents and patent applications



## WRISTWATCH-TYPE WEARABLES (A61B-005/681)

**230** patents and patent applications



Assignee / Product	Sample P/PA	Figure
--------------------	-------------	--------

**PHILIPS**  
**US8968195**  
**Health monitoring appliance**

The invention is a monitoring system which includes a wearable eyeglass, band, belt, patch or bandage appliance; and a processor coupled to the wearable eyeglass, band, belt, patch or bandage appliance to analyze vital data or wellness data.

**ZOLL**  
**US9848826**  
**Wearable monitoring and treatment device**

The invention is a wearable therapeutic device configured to monitor or treat a subject.

**intel**  
**US20170164887**  
**Apparatus and method for estimating changes to human health based on monitoring hair parameters**

The invention is an apparatus for estimating human health and/or estimating changes to human health by monitoring parameters related to hair.

Assignee / Product	Sample P/PA	Figure
--------------------	-------------	--------

**SAMSUNG**  
**US20130261405**  
**Apparatus and method for measuring biological signal**

The Gear Sport tracks your fitness and diet, keeping you on the right path to reach your goals.

The invention is an apparatus for easily and accurately measuring a biological signal by using a wristwatch-type measurement module.

**Apple**  
**US20180050235**  
**Pose and heart rate energy expenditure for yoga**

The fitness tracking device may be calibrated according to physical attributes of the individual and physical activity by the individual user who is wearing the fitness tracking device 100, including, for example, heart rate statistics.

**PHILIPS**  
**US20170014037**  
**System and method for detecting variation of heart rate of a user**

The invention is a system for detecting variation of heart rate of a user. The device comprises a wristwatch-like device, the housing being wearable on one wrist or arm of said user, containing both an optical sensing unit and two electrodes for an ECG-measurement.

## STARTUPS

**empatica**

Empatica's wristband "Embrace" is designed to accurately measure the onset of seizures, which in the long run could determine if one anti-epileptic medication works better than another or when an ambulance should be sent to someone's home.

**CHRONO THERAPEUTICS**

Chrono Therapeutics' SmartStop is a wearable nicotine replacement patch to help smokers quit. SmartStop delivers nicotine in programmable intervals to prevent cravings before they occur.

**CarePredict**

This health tech business produces the Tempo tracker. The watch-like wearable device for seniors tracks the daily activities and behavioral patterns of users and records them in a rhythm journal. After they're recorded, loved ones are alerted when things change.

**BeBop Sensors**

BeBop Sensors, which won the 2015 Frost and Sullivan North American Technology Innovation Awards, develops sensor-embedded fabric technology. Its fabric sensors have the ability to measure a force, location, size, weight, shape, motion and a presence of people and objects.

**bigfoot BIOMEDICAL**

Developing an end-to-end Type 1 Diabetes Management System using simple design, cloud connectivity and human centered automation.

## RESOURCES

### FREE Mixed Reality Patent Landscape Report

Discover the current patent landscape of augmented reality and virtual reality and where it is headed in our Patent Landscape Report.

Download your copy now for FREE!

[DOWNLOAD NOW](#)

### Our Products and Services

From **on-demand and customized patent landscape reports to Prior Art Search**, learn more about Parola Analytics' suite of patent reports and research services.

[LEARN MORE](#)



## ABOUT US

We are a team of patent and technical analysts, data scientists, researchers, and consultants with backgrounds in various fields such as Electrical Communications and Engineering, Computer Science, Physics, Chemistry, Material Science, and Biochemistry. Our expertise in these fields has made us a trusted partner in delivering business-critical insights to decision-makers worldwide.

Our flagship products ParolaNOW and ParolaCUSTOM provide data-driven patent landscape analysis. With our expertise in various fields, we also provide a suite of other patent research services that will help your organization formulate the best strategic business decisions.

Email: [info@parolaanalytics.com](mailto:info@parolaanalytics.com)  
Web: [www.parolaanalytics.com](http://www.parolaanalytics.com)

